


Ash Handling Replacement Parts



Ceramic Lined Flyash Diffuser Feeder

 **P**ower & Industrial Services manufactures improved replacement parts for your United Conveyor Ash Systems. Harder wear resistant cast metals and custom ceramic linings will reduce your maintenance costs by giving you longer wearlife. Power & Industrial Services has no affiliation with United Conveyor. All parts are manufactured by Power & Industrial.

- Interchangeability of assemblies and spare parts with United Conveyor assemblies and parts
- Extensive stock program

Custom Ceramic Lining

- All potential wear surfaces have alumina and/or silicon carbide linings

Wear Resistant Parts

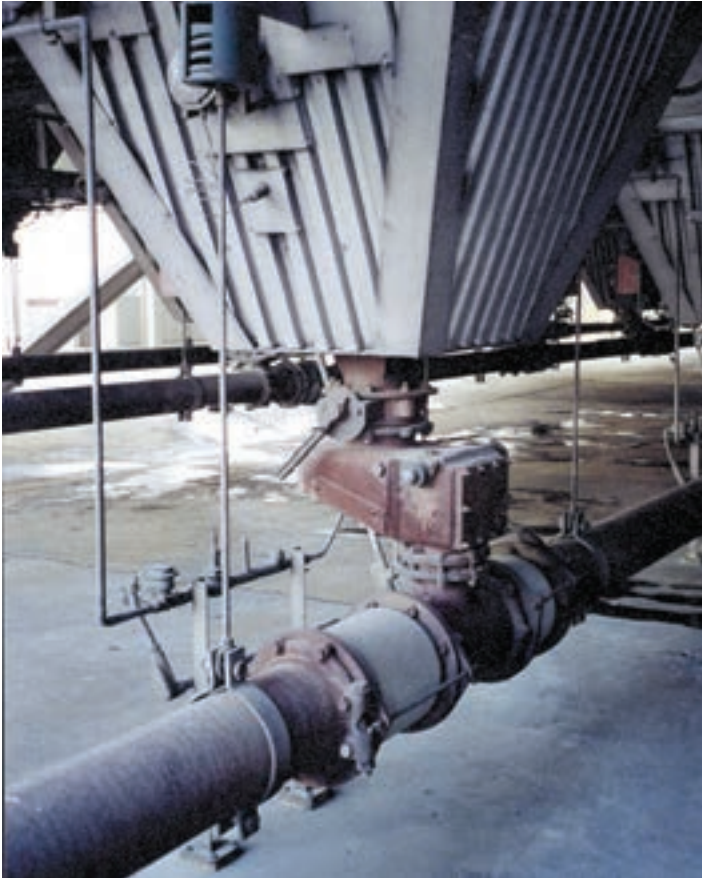
- 600 BHN investment cast seat
- NiHard or Ceramic gate liners



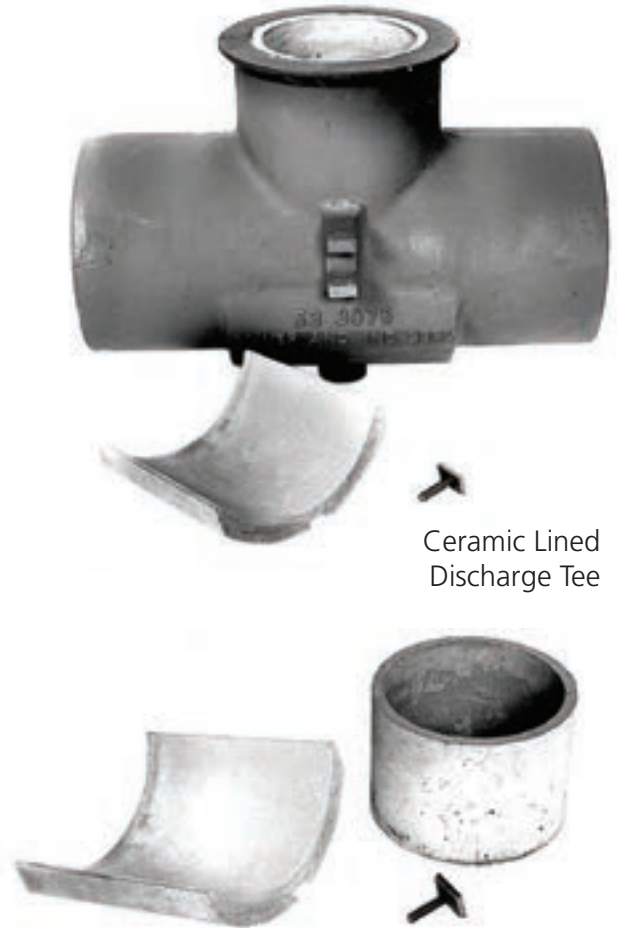


Ceramic Lined Flyash Diffuser Feeder

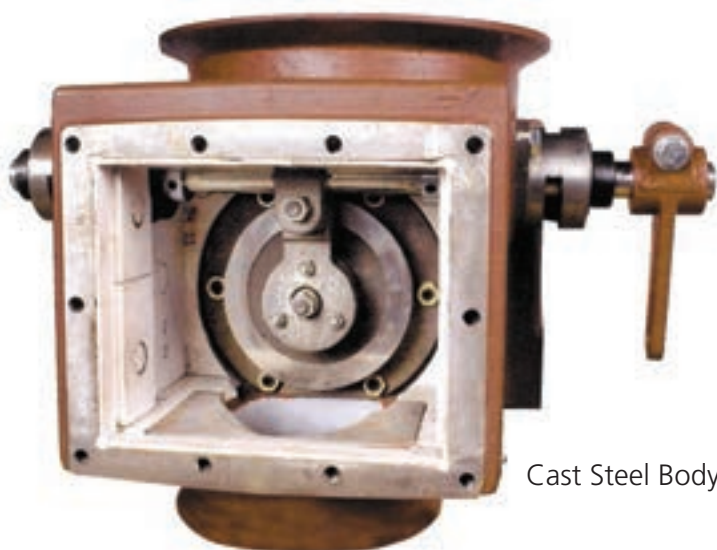
Innovations for Longer Wearlife
Spare Parts are Interchangeable with OEM Parts



Butterfly Valve • Diffuse Feeder • Discharge Tee



Ceramic Lined Discharge Tee



Cast Steel Body



12" Butterfly Valve
Shaft Protectors to Prevent
Ash Erosion

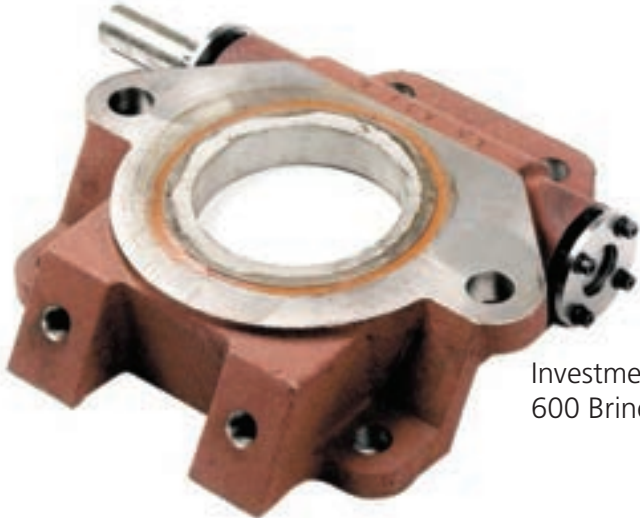
Ceramic Lined Flyash Intake Valves & Tees

Features & Benefits:

- Silicon Carbide body liner – one piece**
- Machine ground ceramic or NiHard gate**
- Replaceable seat – 600 Brinell investment cast**
 - Model A – 4 5/8" I.D. Throat
 - Model B – 4" I.D. Throat
- Cast steel body**



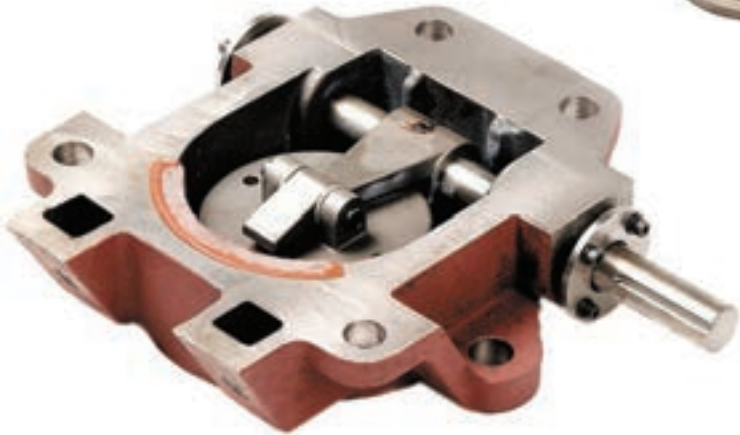
Ceramic Lined Fly Ash Intake Valve Assembly



Investment Cast 600 Brinell Seat



Ceramic or NiHard Gate Liner



Flyash Diffuser Stones & S/S Fluidizing Assemblies



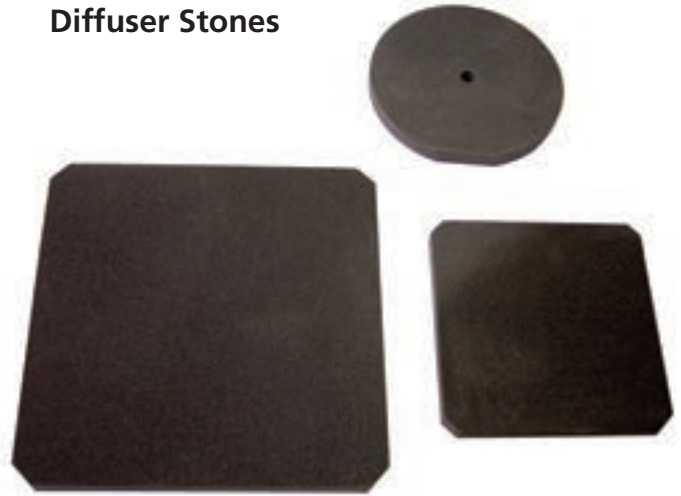
Stainless Steel Fluidizing Assembly

Features & Benefits:

Power & Industrial offers a stainless steel fluidizing assembly consisting of a 316 stainless steel wire mesh fluidizing media with an upper and lower retaining bracket. The assembly is a superior substitute for the diffuser stones.

- Cleanable
 - Moisture resistant
 - Damage resistant
 - Lower pressure drop
- } = **LONGER LIFE**

Diffuser Stones



All Sizes in Stock



Diffuser Fluidizing Assembly

Abrasion Resistant Bottom Ash Slurry Valve



Features & Benefits:

- Steel body with tungsten carbide lined wear areas
- Reinforced abrasion resistant molded valve seat
- Surface ground stainless steel gate
- Molded neoprene gate seal
- Pneumatic cylinder with limit switches
- 150 lb. flange drilling
- Fly Ash & Bottom Ash Pipe
- 300 Brinell
- 500 Brinell
- Plain End
- Mechanical End Joints



Bottom Ash Slurry



Ceramic Lined Elbow



Bottom Ash Pipe



Tungsten Carbide Platelet Lined Gate Guide & Wear Surface, 1/16" Thick



Replaceable Abrasion Resistant Molded Seat



Ash Handling Replacement Parts

Stocking Program

- Spare Parts
- Complete Assemblies



Diffuser Feeder Spare Parts



Flyash Intake Valve Spare Parts & Assemblies



95 Washington Street • Donora, PA 15033

P: 1.800.676.7116 • F: 724.379.4408

www.piburners.com