

### Customer:

San Miguel Electric Cooperative  
442 MW PC Fired Boiler firing Texas Lignite  
Location: Christine, Tx  
Project Date: July 2013 to December 2015

### Service Provided:

- Engineering
- System design
- CFD Modeling
- Equipment supply
- Electrical Controls Supply
- Installation
- Onsite construction management
- System commissioning and training

### Project Summary

Power & Industrial Services provided complete turn-key services and equipment to San Miguel Electric Cooperative to bring Mercury emissions into MATS compliance.

### Equipment Supply:

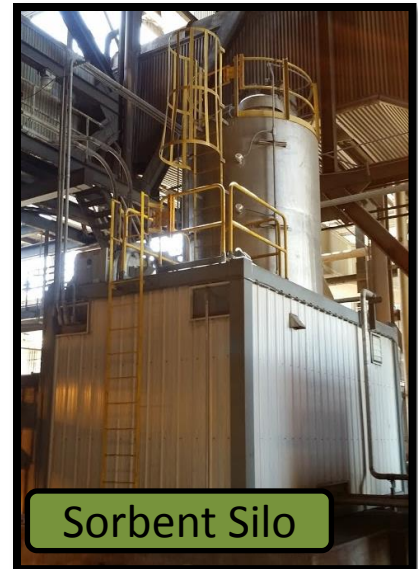
- 5,000 ft<sup>3</sup> PAC storage silo
- PAC feed equipment shop installed in silo skirt
  - Feed range from 20 to 350 lbs/hr
- Blowers, BOP piping, distribution header, and injectors for PAC
- 500 ft<sup>3</sup> Stainless Steel Sorbent additive storage silo
- Sorbent additive feed building with blowers and controls
  - Feed range from 15 to 150 lbs/hr
- BOP piping, distribution header, bent tube panels, and injectors.

### Project Description

San Miguel Electric Cooperative retained the services of Power & Industrial Services to engineer, design, manufacture, and install a complete system for the reduction of Mercury. To achieve MATS compliance emissions levels, Power & Industrial's equipment supply included both PAC injection equipment in the back end of the unit, as well as equipment for the injection of a sorbent additive directly above the over fire air ports. Post installation, the plant achieved compliance while using less than expected PAC material.



PAC Silo



Sorbent Silo

Post Installation Mercury:  
< 4.0 lbs/T BTU